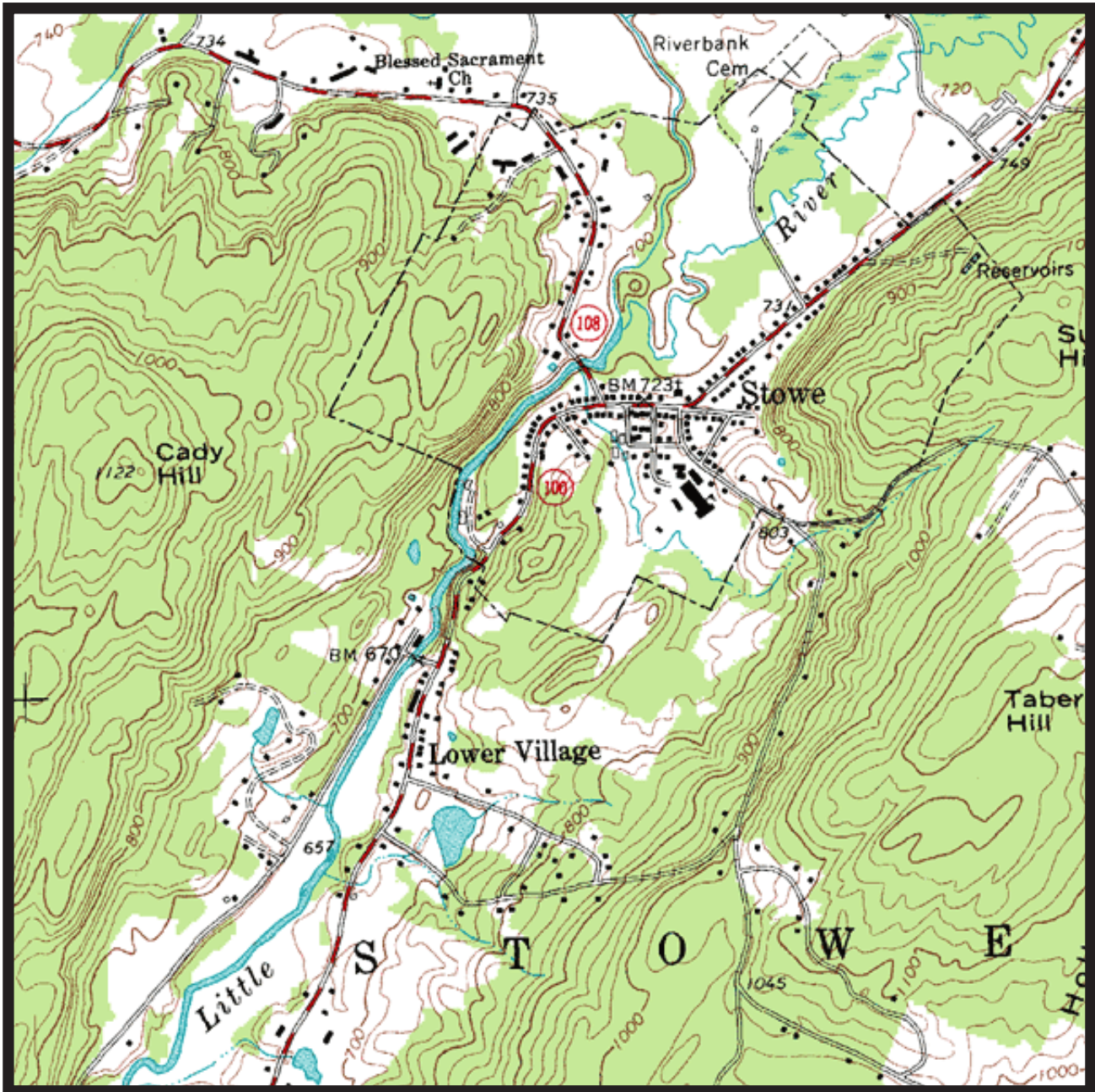


Topographic Map Example

CACC Standard 7G

Name _____



YOUR TASK: Identify the correct azimuths to move from point A to B, then B to C, and then C back to A.

- Point A: Blessed Sacrament Church (top center of map)
- Point B: Reservoirs at top right quadrant of map
- Point C: Summit of Cady Hill (1122 feet)